
SYLFF

Sasakawa Young Leaders Fellowship Fund



The SYLFF fellowship program of the Tokyo Foundation (TKFD) **supports the education of outstanding students with leadership potential.**

- [Selection criteria](#)
- [Terms and conditions for awarding the fellowship at CU](#)
- [Procedures for nomination and selection of candidates](#)
- [Forms](#)
- [Program schedule](#)
- [University committee](#)
- [Evaluation of results](#)
- [SYLFF Fellows](#)
- [Contact person](#)

SYLFF provides a maximum of two years of financial support to students of PhD programmes in the social sciences or humanities for writing their dissertations. An important criterion for supporting specific research is its **contribution to society.**

SYLFF is a network of **16,000** exceptional students from **69** leading universities in **44** countries around the world. The supported applicants, SYLFF Fellows, are presented on the [Sylyff Association](#) website.

The fellowship allows students not only to connect with other fellows, but also offers them opportunities to obtain additional funding through [support programs](#) .



Additional information is also available in the manual

Selection criteria

The applicant must primarily meet the following criteria:

- At the time of applying, **students must be a full-time PhD student (maximum 3rd year)** at any of the participating CU faculties:
 - Faculty of Arts / Faculty of Social Sciences / Faculty of Humanities / Faculty of Law / Faculty of Education / Hussite Theological Faculty / Protestant Theological Faculty / Catholic Theological Faculty
- For the entire period of the fellowship, students must be enrolled in studies at Charles University.

As part of the selection of applicants, the following qualities will be evaluated:

• Leadership Skills	0-30 points
• Contribution of Research to Society	0-30 points
• Past Academic Activities of the Applicant	0-20 points
• Meaningfulness of Proposed Research Abroad	0-20 points
• Presentation of the Dissertation (evaluated only within the rectoral round)	0-30 points

Terms and conditions for awarding the fellowship at CU

- A total of **two new fellowships** are awarded **every year**.
- The fellowship is awarded for one year, and it can be extended by another year based on fulfilment of the individual curriculum.
- The amount of the fellowship is **USD 12,500/year**.
- If students receive or plan to apply for another scholarship/grant at the same time as the SYLFF fellowship, this must be stated in the application together with its amount and purpose. Covering the same expenses through multiple scholarships is not possible.
- Students must achieve the following during the fellowship:
 - Complete their dissertation or a substantial part of it
 - Carry out a study visit abroad.
- **The fellowship is not intended for students studying outside the standard period of study.**
- Supported students are required to state in their dissertation that their work was made possible with the support of the SYLFF fellowship.

Procedures for nomination and selection of candidates

1.

Announcement of call for applications:

The Vice-Rector for International Affairs and Mobility at CU announces the call to the participating faculties in a letter to the vice-deans for international affairs (see [schedule](#)).

2.

Announcement of selection procedure by the faculties:

The faculties announce the selection procedure on their web pages and in other accessible media.

3.

Application process:

Applicants complete the application, provide all supporting documents (see [form](#)), and submit everything to the international relations office of their faculty by the deadline published on the faculty web pages. The individual faculties communicate with the applicants.

4.

Submitting documents to the Rectorate's International Relations Office:

Faculties submit information to the International Relations Office for a maximum of two of the best candidates in the faculty selection procedure together with all of their documents by the deadline set by the Rectorate's International Office in the [schedule](#) . An overview of documents that need to be submitted to the Rectorate's International Office is provided in the section [Application Form](#) . Faculties will also attach the Evaluation Sheet provided by Rectorate to the faculty coordinators.

5.

Meeting of the SYLFF committee:

The nine-member University Committee meets on a date scheduled in advance (see [schedule](#)). The committee consists of the Vice-Rector for International Affairs and Mobility and eight representatives from the participating faculties. The committee will evaluate the applicants in preferential order.

6.

Announcement of the results to applicants:

All applicants are informed of the results of the selection procedure by their faculty.

The winning candidates are nominated (see [schedule](#)) at the TKFD for final approval. They are then contacted directly by the TKFD, which also signs a contract with them.

Application form

A

SYLFF fellowship applicants

Applications must be submitted in [English in pdf format](#) and must contain the following documents:

- [SYLFF Application Form](#)
(Applicants requesting an extension of the scholarship submit the [SYLFF Extension Application Form](#))
- Applicant's CV (max. two A4 pages)
- Motivation letter (max. one and a half A4 pages)
- [Recommendation letter](#)
(Applicants requesting an extension of the scholarship submit a [Recommendation Letter \(Extension\)](#))

B

Successful applicants

- Provide their [Bank Account Information](#) for crediting the fellowship funds.
- During the fellowship, they are required to write an interim reports and a [Final report](#) relating to their activities.

Program schedule

by February 16	Rectorate announces the call for applications to the faculties
by April 30	Applicants submit applications to the faculty coordinator (faculty selection process follows)
by May 31	The faculty nominates candidates at the Rectorate
by June 30	Rectorate's selection process: Sylff Committee meeting (interviews with the best candidates, determination of the winning candidates)
by July 13	Rectorate submits the results of the selection process to the faculties and nominates the winning candidates to TKFD
by July 21	The faculty coordinator announces the results to all applicants
by August 31	Approval by TKFD, signing contracts with fellows (winning candidates)
in October	TKFD arranges bank transfer of fellowships

University committee

Chair:

Prof. PhDr. Eva Voldřichová Beránková, Ph.D. - Vice-Rector for International Affairs (Rectorate)

Members:

PhDr. Milan Žonca, Ph.D.	Faculty of Arts
doc. JUDr. Mgr. Magdalena Pfeiffer, Ph.D.	Faculty of Law
PhDr. Zuzana Kasáková, Ph.D	Faculty of Social Sciences
doc. Veronika Čapská, Ph.D.	Faculty of Humanities

doc. PhDr. Martin Rusek, Ph.D.	Faculty of Education
doc. ThDr. Kamila Veverková, Ph.D.	Hussite Theological Faculty
prof. ThDr. Martin Prudký	Protestant Theological Faculty
PhDr. Markéta Jarošová, Ph.D.	Catholic Theological Faculty

Evaluation of results



Before the end of the first year, the university committee evaluates the fellow's achievements in the form of an interview and confirms the continuation of their fellowship for the following year.

At the end of the two-year period, the university committee evaluates the results after presenting the final theses with a list of publications and other work from the students.

Frequently asked questions

Visit [FAQ](#)

SYLFF Fellows

SYLFF Fellows 2025	
	<p>Zuzana Arazim Dolejší, Faculty of Education Zuzana's doctoral research focuses on developing critical thinking in mathematics education. She explores how to adapt standard teaching practices within the curriculum to support skills such as working with information, recognizing relevance, detecting misleading data, and strengthening argumentation abilities. She is involved in creating and teaching the course Critical Thinking in Mathematics at the Faculty of Mathematics at the University of Vienna, where she plans to collaborate with future mathematics teachers and apply the insights gained to student education and teacher training in the Czech Republic.</p>
	<p>Barbora Doležalová, Faculty of Social Sciences Barbora (she/her) focuses on the sociology of work, gender, and sexuality. She is currently conducting feminist participatory action research on sex work in the Czech Republic. Her work explores possibilities for social justice, collective organizing, and intersectional precarization within the sale of sexual services. She is also interested in prison abolition, anti-gender discourses, and the political landscape in Malta. Outside academia, she strives to be active in pro-choice, queer, anti-racist, leftist, and vegan justice movements.</p>
SYLFF Fellows 2024	



Tomáš Koref, Faculty of Law

Tomáš focuses on judicial decision-making and legal argumentation. He investigates how courts apply law in practice, connecting legal theory with empirical research, machine learning, and didactics. His research pursues three goals: to theoretically categorize incorrect legal reasoning; to empirically uncover how supreme courts argue and why they overturn lower court rulings; and to develop a new course on legal application for the Czech law curriculum.



Jan Musil, Faculty of Arts



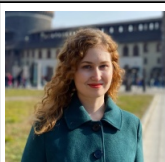
Jan focuses on thanatographies—autobiographical narratives about death, loss, and mourning—particularly in Central Europe. He is interested in why people often tend to avoid the topic of death and how the stories of others can help us cope with loss. He also explores how death, loss, and grief can be depicted in literature and how thanatographies circulate in culture alongside genres like horror, true crime, or climate crisis writing.

SYLFF Fellows 2023



Michal Gladiš, Faculty of Humanities

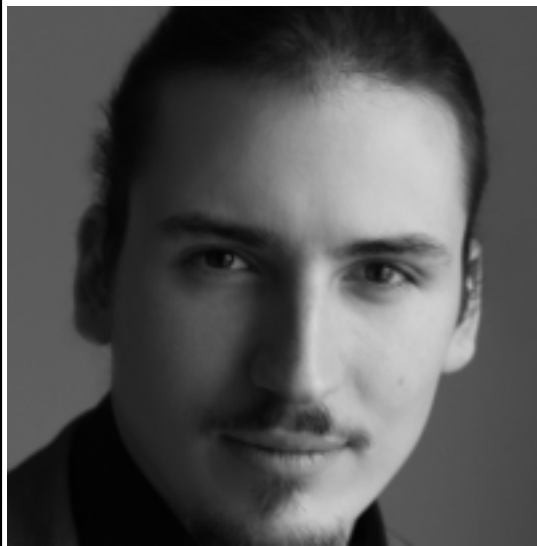
Michal focuses on ethics and human values in technologies, biometrics enhanced by affective computing capabilities, and the impact of AI on human cognition, emotions, and behavior. In his dissertation, he explores the opportunities and risks associated with the use of AI assistants.

	<p>Filip Jelínek, Faculty of Law Filip focuses on public law and constitutional theory. In his dissertation, he addresses the issue of state inactivity and its legal grasp. He is close to so-called positive constitutionalism, interested in the relationship between law and public policy, the concept of public interest, and also classical questions of constitutional, legal, and political theory.</p>
<p>SYLFF Fellows 2022</p>	
	<p>Michaela Honelová, Faculty of Humanities In her project, Michaela deals with the sociological understanding of anti-ageing aesthetic surgery in the Czech context. Her research interest is the so-called path that leads a woman to undergo anti-ageing surgery. With this work, she would like to contribute to the sociological debate about the functioning of power in medicine and society. Currently, in addition to anti-ageing, Michaela is also interested in the issue of gender in society.</p>
	<p>Jana Soukupová, Faculty of Law Jana specializes in IT law with a focus on data, virtual reality, and digital assets. As part of her dissertation, she examines digital assets and their impact on contemporary law and legal regulation. Specifically, Jana is interested in the legal nature of digital assets and the rights of users to this intangible property.</p>
<p>SYLFF Fellows 2021</p>	



Ivana Hay, Faculty of Education

Ivana focuses on the education of deaf children in the area of art education. She is looking for ways to make museums and galleries accessible to deaf children and their teachers. Ivana also focuses on the question of whether deaf students have the opportunity to learn something about their own culture and art in art classes. Thanks to the SYLFF fellowship, she has had the opportunity to visit Poland and the United Kingdom to observe access and activities for deaf children and adults.



Lukáš Lev Červinka, Faculty of Law

Lukáš is interested in the socio-legal study of constitutions and (anti)establishment thinking. His current research project focuses on the impact of anti-establishment parties on the constitutional systems of Italy and the Czech Republic.

Current information

Follow the [SYLFF at the CU](#) Facebook page.

Contact person

Ing. Anna Tlamichová

International Relations Office

anna.tlamichova@ruk.cuni.cz